

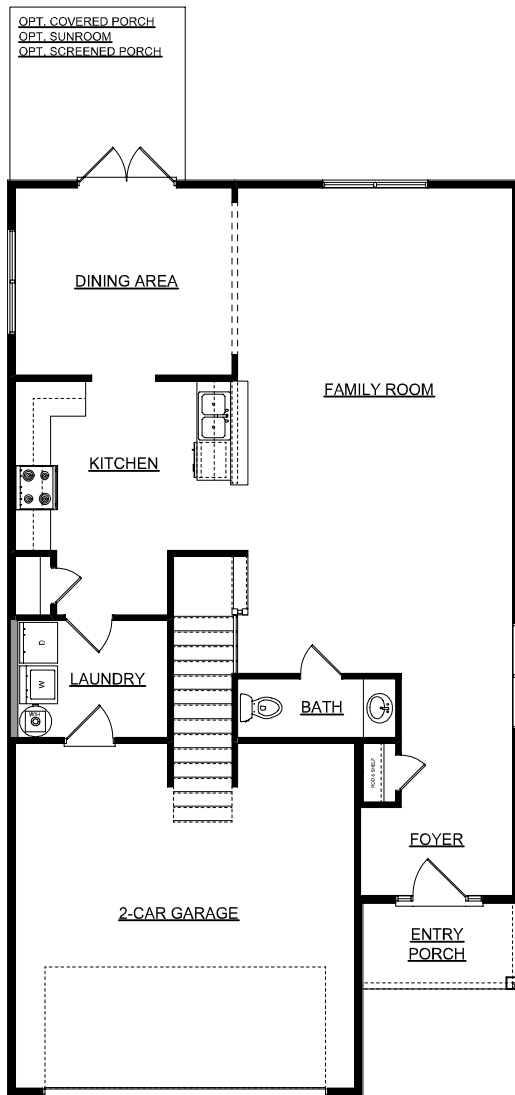


**CARRINGTON CHASE**  
*at LAKES OF SUMMERVILLE*  
 An NLP Homes, LLC Community

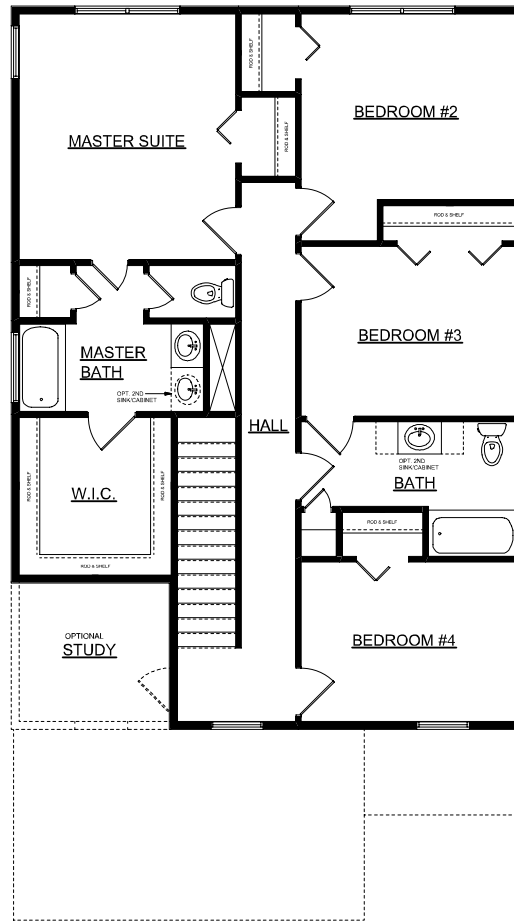
# The Wentworth

**2,137 sq. ft. • 4BR, 2.5BA • 2 Car Garage**

The Wentworth offers 2,137 square feet at an affordable price. The kitchen opens into a spacious dining area and family room with optional fireplace for your casual lifestyle. You can kick off your shoes when you enter this home from the two car garage into the large mud/laundry room. This four bedroom home even comes with the option to add a study if you need a little more room. This floor plan offers plenty of space whether it is your first home or it is your last! This is easy living at its best!



1ST FLOOR PLAN



2ND FLOOR PLAN

Figures reflecting size, square footage and other dimensions are for estimating purposes only and may vary from actual construction which may increase plan modifications, additions or changes. Floor plans may vary according to elevation. Prices, plans, dimensions, features, specifications, materials and availability of homes are subject to change without notice or obligation. Illustrations are artist depictions only and may differ from completed construction and may change without notice.